



# The First Pres

February 2012



Newsletter for the First Presbyterian Church, Charlottesville, Virginia

## Known, Loved, and Companioned by God Women's Retreat Led by Liz Forney March 16-17, 2012

Join us for a weekend of deepening faith,  
creativity and cultivating new friends.

Our time together will focus on the following passage from Isaiah 43:



1 "But now thus says the Lord, the One who created you, O Jacob, the One who formed you, O Israel: Do not fear, for I have redeemed you; I have called you by name, you are mine. 2 When you pass through the waters, I will be with you; and through the rivers, they shall not overwhelm you;

When you walk through fire you shall not be burned, and the flame shall not consume you. 3 For I am the Lord your God, the Holy One of Israel, your Savior. I give Egypt as your ransom, Ethiopia and Seba in exchange for you. 4 Because you are precious in my sight, and honored, and I love you."



Scripture tells us that God knit us together in our mother's womb, and that God even knows the number of hairs (and their real color) on our head. Do we have a sense that God truly knows us?

Scripture also tells us that God loves us passionately. How do we access that sense of being loved? What does it look like to let God love us? How does it change how we see ourselves?

What are some of the fires we face as women? What are the waters that threaten to drown us? Where is God in these? How can we make ourselves available to God's love when the chaos of life threatens to overwhelm us?

### COME EXPLORE THESE QUESTIONS WITH FRIENDS IN FAITH

#### Details

##### Friday, March 16

6:30 p.m. – 8:30 p.m.

Potluck supper, fun, and games. (Discipleship Ministry Committee will supply barbecue sandwiches for the main dish, last names A-H please bring salads, I-P please bring side dishes, and Q-Z please bring desserts.)

##### Saturday, March 17

8:30 a.m. – 3:00 p.m.

Continental breakfast, worship, bible study, creative play, lunch, and digging deeper

**Cost: \$25 for continental breakfast, lunch, and materials**

**Child Care will be provided on Saturday from 8:30 a.m. – 3:00 p.m.**

Registration forms are available in the church office or in the fellowship hall. Return the registration form and a check (made out to First Presbyterian Church) to Colleen Plitt by March 12 to reserve your place.

Questions? Contact Colleen Plitt at (434)296-7131 ext. 206, or [cplitt@fpchurch.com](mailto:cplitt@fpchurch.com)



#### In this Issue:

|                              |   |
|------------------------------|---|
| Discipleship Ministry        | 2 |
| Sunday School                | 3 |
| Visitation & Health Ministry | 4 |
| The Up Beat                  | 4 |
| PW News                      | 5 |
| PACEM Thank You              | 5 |
| Fellowship                   | 5 |
| February Calendar            | 6 |
| Memorial Garden              | 7 |
| Prayer Concerns              | 7 |
| Announcements                | 8 |



# DISCIPLESHIP Ministry



## FEBRUARY WORSHIP AND DISCIPLESHIP MINISTRY SCHEDULE

8:55 a.m. Contemporary Service  
10:05 a.m. Sunday School for children and adults  
11:15 a.m. Traditional Service

*Child Care is available in the nursery during church services and the Sunday School hour. Rising first graders and older are encouraged to worship with their parents. Worship bags are available in the Narthex for the children during worship.*

*The children's library is located in Room 109 and is self-checkout. There is a box in the Narthex for easy return of books. Children are encouraged to check out books to bring with them to service.*

### February Sunday School Classes for Adults

Class: **20s and 30s and Faith and Family**,  
Location: Rooms 116  
Leader: Liz Forney

This 6-week class that started on January 8 explores meaningful ways to discover the sacred in small things we do and see. Simple practices like walking, working, and prayer open us to fresh encounters with the holy. If you have ever wanted to make God a part of your everyday life, this is the course for you. Participants will enjoy reading the book, **An Altar in the World** by Barbara Brown Taylor, and engaging in the weekly exercises. The book can be purchased for \$10 from Colleen Plitt or can be ordered through Amazon.com.

Class: **Spiritual Journeys**

Location: Room 216

Leader: Jay Swett

We speak of God's love, his mercy, his grace, his compassion, and his infinite capacity to forgive our sins. But what of God's judgment? What can we learn from God's response to sin and evil, in the Old Testament as well as in the new Testament? In Matthew 25:31, did not Jesus speak of sitting on his throne to separate the sheep from the goats? What about Salvation? Does that give us a free ride? Our class will take a journey not often traveled, a discussion of judgment, salvation, and eternity.

Class: **Scripture of the Day**

Location: Room 217

Coordinator: Bobby Beamer

This class is an in-depth study of the scriptures read in the Worship Service each Sunday led by class members. This is an excellent opportunity to comprehensively learn the scripture.



### Special Lenten Class -

February 26-April 1

Class: Rendering Speech: Praying the  
Psalms Today

Location: Chapel

Leader: David Forney

Are you joyful...gloomy...befuddled...or livid about this world? Perhaps you have so many emotions that their collective white noise has left you numb. Or maybe you are flying high, on top of the world, and all is well with your soul. Whatever the case of your emotional well-being, the Psalmist has felt them too. This class will be a journey into the ways in which the Psalms offer our souls a script when we have none and to imagine our life differently with God.



### Deacon Ministry

#### Giving Thanks to God

The Deaconate would like to give thanks to PACEM and church volunteers for housing, feeding, and caring for the homeless men in early January; Doug Starns for his steadfast leadership as Moderator of the Deaconate in 2011; Jim and Vicki Snead for hosting the Elder and Deacon Christmas party; Sally Clarry for her incredible minute taking as secretary of the Deaconate for two years ending in 2011; Kathy Freer for her guidance and assistance to the Deaconate; Alex Slawski for his time helping to create the new photo directory; Barbara Herath and Sharon Albert for their years of coordinating the fellowship hour, and to all of the outgoing deacons for their commitment to serve our church.

### Women at the Well is Back!

*Women at the Well* is a monthly lunchtime gathering of working women in our congregation. This is not another responsibility to shoulder or another commitment to step up to. This is intended to be one hour a month of nourishment, both spiritual and physical, for women who can't always make the time for fellowship with one another.

Please join us for a delicious lunch on Thursday, February 9 at 12:30 p.m. in Room 216, catered by Revolutionary Soup. The cost is \$6 per person.

Email Colleen Plitt at [cplitt@fpchurch.com](mailto:cplitt@fpchurch.com) to RSVP (so we can plan lunch) or if you have any questions. See you there!



## Sunday School Classes for Children & Youth



### Pre-Kindergarteners

Room 104

The Pre Kindergarteners will meet with their shepherds in the Toddler Nursery and return there after their workshop.

### Rotation Workshop (K—5th grade)

Fellowship Hall

Kindergarteners through 5<sup>th</sup> graders will meet with their shepherds in the fellowship hall, go to their workshop and then return to the fellowship hall for pickup.

This month, the children will finish the rotation "John the Baptist: Preparing for the Light and begin a new rotation "Easter" Following The Light." Children will follow the "light" of Jesus through Holy Week and learn that death cannot overcome the light of Jesus.

### Confirmation Class 1 (6<sup>th</sup> and 7<sup>th</sup> grades)

Room 100

Purpose: to create a peer learning community with a focus on establishing a foundation of biblical literacy

### Confirmation Class 2 (8<sup>th</sup> and 9<sup>th</sup> grades)

Carriage House

Purpose: to develop an understanding of the Christian faith in the Presbyterian tradition and to explore a personal faith in Jesus Christ, with the option to become an active member of First Presbyterian Church at the end of the year

### High School (10<sup>th</sup>-12<sup>th</sup> grades)

Room 117

Purpose: to continue growing a personal faith in Jesus Christ with a deepening understanding of the Bible as a tool for ongoing discipleship

| John the Baptist:<br>Preparing for the<br>Light | MOVIE<br>Room 102<br>Barbara & Bill<br>Carswell | DRAMA<br>Room 118<br>Nancy Spindel &<br>Debbie Vermillion | SCIENCE<br>Room 114<br>David Schmidt &<br>Jennifer Jones | ART<br>Room 108<br>Jamie<br>Slawski | BIBLE VARIETY<br>Room 109<br>Linda Hitt &<br>Sally Clarry |
|---|---|---|--|-------------------------------------|---|
| February 5                                      | Kinder/1 <sup>st</sup>                          | 2 <sup>nd</sup> /3 <sup>rd</sup>                          | 4 <sup>th</sup> /5 <sup>th</sup>                         | No Workshop                         | PreK  |

| Easter: Follow-<br>ing The Light | MOVIE<br>Room 102<br>Barbara and<br>Bill Carswell   | STORYTELLING<br>Room 109<br>Ralph Stoudt | GAME<br>Room 114<br>Nancy Spindel &<br>Marta Ramsey | SCIENCE<br>Room 118<br>David Schmidt &<br>Jennifer Jones | COOKING<br>Kitchen<br>Barbara Herath |
|----------------------------------|---|--|---|--|--------------------------------------|
| February 12                      | PreK  | Kinder/1 <sup>st</sup>                   | 2 <sup>nd</sup> /3 <sup>rd</sup>                    | 4 <sup>th</sup> /5 <sup>th</sup>                         | No Workshop                          |
| February 19                      | Children in kindergarten through 5 <sup>th</sup> Grade will meet with Colleen in the fellowship hall for a special Sunday School Class during the Congregational Meeting. |  |   |  |                                      |
| February 26                      | No Workshop   | PreK                                     | Kinder/1 <sup>st</sup>                              | 2 <sup>nd</sup> /3 <sup>rd</sup>                         | 4 <sup>th</sup> /5 <sup>th</sup>     |



### SERVICE OF WORSHIP FOR ASH WEDNESDAY

**Wednesday, February 22, 2012**

**7:00 p.m. in the Sanctuary**

Lent is a time to prepare for the Easter celebration of our redemption through the death and resurrection of our Lord Jesus Christ. We begin our journey toward Easter Sunday by joining together for a service of worship, repenting together as a community held together by God's loving grace and forgiveness. Please join us for this time of fellowship, worship, community repentance, and trust in God's grace.

## Music Ministry



### Sanctuary Choir News

Elizabeth Norfrey,  
Interim Choir Director  
enorfrey@fpchurch.com; 296-7131 x212



A new year is a great opportunity to try something new or something you have always wanted to do. If you have always wanted to worship God through music and be part of a caring, faith community, the Sanctuary Choir may be the place for you. Rehearsals are on Wednesday evenings, 7:30-9:00 p.m. and Sundays at 10:30 a.m. before the 11:15 a.m. worship service. You will be welcomed and appreciated! Music reading and prior experience are helpful, but not required. We train! Free vocal coaching is available to choir members.



### Meal Train an Easy Way to Organize Meal Assistance!

Know someone with a new baby? Or recently fallen ill, had surgery or lost a loved one? He or she may be having difficulty preparing meals and could benefit from the aid of Meal Train, a helpful website that organizes meal deliveries. Many times we want to help but don't know who to contact or how to plug in. Whether for a few meals, few weeks or few months, Meal Train establishes a schedule that everyone can see and makes signing up for a meal a snap, including listing your meal so that duplicates can be avoided. Directions, contact information, best delivery times, food preferences or allergies and other helpful information is posted to the sign-up page.

Visit [www.mealtrain.com](http://www.mealtrain.com) to learn more about this helpful service. If you are interested in organizing a Meal Train, a brief tutorial walks you through the basic steps.

If you need further assistance, you may contact Teller Stalfort at [tstalfort@gmail.com](mailto:tstalfort@gmail.com) or Parish Nurse Kathy Freer at [kfreer@fpchurch.com](mailto:kfreer@fpchurch.com) or by calling 296-7131, ext. 210.

# THE UP BEAT

Youth Ministry

February 2012

## Mid High Youth Group

### First Friday, February 3

On the First Friday evening of each month, mid high youth are invited to join us for a night of fun at various locations outside the church. This is a great time to invite friends who might not be as used to attending events at a church. First Fridays are led by mid high parents - this month, the Levines and the Plitts. We will see the movie "Big Miracle!".

### Sunday, February 12 & 26

Mid High Youth Group  
4:00-6:00 p.m., Mid High Room (Room 100)  
4:00-5:00 p.m., Mid High Program  
5:00-6:00 p.m. Dinner & Games with Senior Highers

### Sunday, February 19

Mid High Lock-In!  
Sunday p.m.-Monday a.m., Mid High Room

## Mid and Senior Highs

### Sunday, February 5

10:05 a.m., and 12:15 p.m.  
Souper Bowl Sunday!! We will be collecting donations at the exits of the church after both services on this Super Bowl Sunday to support our own Soup Kitchen. Please let us know which service you can help with.



## Senior High Youth Group

### Friday-Sunday, February 10-12

Senior High Ski Trip  
Wintergreen Resort

### Sunday, February 19 & 26

Senior High Youth Group  
5:00-7:00 p.m., Senior High Room  
5:00-6:00 p.m. Dinner & Games with Mid Highers  
6:00-7:00 p.m. Senior High Program

### The deadline for the March issue of *The First Pres* is Wednesday, February 15.

Send your submissions to Becky Ewing at [rewing@fpchurch.com](mailto:rewing@fpchurch.com)



Past issues of *The First Pres* are always available on our church website at [www.fpchurch.com](http://www.fpchurch.com).

### First Presbyterian Church offers the following for those at home:

- ♥ Radio Broadcast on WINA (1070 on the AM dial) of our service from the previous week from 9:30-10:00 a.m., Sunday mornings.
- ♥ Access audio sermons on the website at [www.fpchurch.com](http://www.fpchurch.com). Click on "Audio Sermons."

### Please call the church office at 296-7131, if you are interested in receiving:

- ♥ complimentary CD of the current week's sermon by mail
  - ♥ a pastoral call
  - ♥ communion at home
  - ♥ a parish nurse visit
- ♥ visits from a church member
- ♥ help with church transportation



**Presbyterian Women -  
nurture faith, support mission,  
work for justice and peace,  
and build community**

**SAVE THE DATE!**

Thursday, April 19, 4:00 p.m. - The Presbyterian Women Spring Gathering! Join us for an afternoon together sharing fellowship and listening to a dynamite mission speaker. It promises to be a delightful afternoon that will inspire you!

**February Fair Trade Coffee/Tea/Cocoa**

What does every Valentine want? Why, Love Buzz Fair Trade coffee, of course! We have tea and cocoa, too. Make sure you stop by Fellowship Hall to support Presbyterian Women and refresh your supply on Sunday, February 5, before, during or after services. Cash and checks always welcome.



**Fellowship of the Least Coin 2011 Grants**

By Corazon Tabing-Reyes

The Fellowship of the Least Coin (FLC) is first and foremost a prayer movement. When women pray for justice, peace and reconciliation, FLC asks that they set aside the least coin of their country for the support of women and children around the world. The least coin is significant because women in any economic context can give equally. In more than 80 countries around the world, women are in solidarity through prayer and their least coins. Funds are collected regionally, but total income from each region is not publicized. Grants are distributed through the International Committee for the Fellowship of the Least Coin (ICFLC) to individual projects as well as to church conferences and organizations; ICFLC also distributes emergency grants for disaster relief. Beginning in 2011, a grant also is awarded annually to provide a scholarship for young women. In allocating project grants, the committee supports opportunities for



- awareness-raising and/or education for women on gender issues;
- programs on literacy, health, social concerns and leadership development;
- promoting justice, peace and reconciliation in families, communities and the environment;
- gathering women to meet ecumenically, regionally, nationally and worldwide.

Project Grants—\$181,530!

(Full article and grant disbursements are available in *Horizons: The Magazine For Presbyterian Women* Nov/Dec 2011 in our Library)

Support the Fellowship of the Least Coin (FLC) by learning more about this prayer movement; visit FLC's website, [www.flc.net.ph](http://www.flc.net.ph), or PW's Least Coin page.

**THANK YOU, THANK YOU**

To all of our church members who contributed to the success of our 2 weeks of hosting PACEM guests – THANK YOU. Each of you is a patch in the quilt that covered our guests with kindness and hospitality.



Hearty thanks go to those who:

- Donated breakfast food, snacks, juice, and milk
- Participated in the evening activities
- Stayed overnight
- Made monetary contributions
- Help set up and tear down cots
- Cleaned the Carriage House, bathrooms, and Fellowship Hall
- Served as lead volunteers
- Transported sheets, towels, and other supplies

We also give thanks for the volunteers from other congregations and groups. We are especially grateful for those who prepared and served our evening meals: our hosting partner, Congregation Beth Israel, as well as Broadus Memorial Baptist Church, Charlottesville Vineyard Christian Church, Orange Church of Christ, Piedmont House, and PD Yates.

God bless you and thank you so much!

Jennifer Jones and Wayne Turner

**What Is "Fellowship"?  
Who Does "Fellowship"?**

Church Fellowship is what we make it, and we do it each Sunday. We meet our "fellow" church goers in Fellowship Hall after services and between services for a moment of camaraderie. You can help this tradition to continue by volunteering your "Fellowship" and hosting a Fellowship Hour. The Deacon's Fellowship Committee has everything organized for you. The food is here at the church, and the process is simple. A member of this committee will meet you on a Sunday of your choice and go through the steps with you—a no muss no fuss experience, just the opportunity to meet, greet and serve our congregation.

In addition to hosting a Fellowship Hour, the Fellowship Committee needs folks to bake and help stock our pantry. So... if you love to bake, organize, or shop, this is a chance for you to help us carry on the tradition of coffee, snacks, juice, and a time to connect with one another.

Contact Fellowship Committee co-chairs Dorman Parrish at [dormanparrish@msn.com](mailto:dormanparrish@msn.com) or Nancy Tuz at [Ptuz@aol.com](mailto:Ptuz@aol.com)



**Fellowship = Fun, New Friends,  
and Christian Sharing!**

# February 2012



| Sun  | Mon  | Tue   | Wed  | Thu   | Fri   | Sat   |
|--|--|---|--|---|---|---|
|  |  |   | <b>1</b> 2 p.m. PW Bible Study<br>4 p.m. PW Coordinating Team<br>5:30 p.m. Bell Choir<br>5:45 p.m. Youth Choir Dinner<br>6:15 p.m. Youth Choir<br>6:15 p.m. Praise Team<br>7:30 p.m. Sanctuary Choir   | <b>2</b>  | <b>3</b><br>Mid Hi Fun Event                            | <b>4</b>  |
| <b>5</b> Communion<br>8:55 a.m. Worship<br>10:05 a.m. Sunday School<br>10:05 a.m. New Member Class<br>11:15 a.m. Worship<br>4 p.m. Youth Choir   | <b>6</b> 7 a.m. Men's Bible Study<br>12:30 p.m. Ella Payne Circle<br>Committee Night:<br>6 p.m. Worship<br>6:30 p.m. Christian Outreach<br>6:30 p.m. Evangelism<br>6:30 p.m. Stewardship<br>7 p.m. Discipleship Ministry | <b>7</b><br>9:30 a.m. Staff Meeting<br>12 p.m. Men's Lunch (Expresso)<br>12:30 p.m. Elizabeth Circle  | <b>8</b> 2 p.m. PW Bible Study<br>5:30 p.m. Bell Choir<br>5:45 p.m. Youth Choir Dinner<br>6:15 p.m. Youth Choir<br>6:15 p.m. Praise Team<br>7:30 p.m. Sanctuary Choir  | <b>9</b> 9:30 a.m. Quilt Sowers<br>12:30 p.m. Women at the Well | <b>10</b><br>Sr. Hi Ski Trip to Wintergreen (thru 2/12) | <b>11</b>   |
| <b>12</b> 8:55 a.m. Worship<br>10:05 a.m. Sunday School<br>10:05 a.m. New Member Class meets w. Session<br>11:15 a.m. Worship<br>4 p.m. Youth Choir<br>4-6 p.m. Mid Hi Youth Group                   | <b>13</b><br>7 a.m. Men's Bible Study<br>5:30 p.m. Finance & Administration Comm.<br>7 p.m. Preschool Council<br>6 p.m. Property Management Committee  | <b>14</b> <br>9:30 a.m. Staff Meeting<br>1 p.m. Circle Six | <b>15</b> 2 p.m. PW Bible Study<br>5:30 p.m. Bell Choir<br>5:45 p.m. Youth Choir Dinner<br>6:15 p.m. Youth Choir<br>6:15 p.m. Praise Team<br>6:30 p.m. Evening Circle<br>7:30 p.m. Sanctuary Choir   | <b>16</b>   | <b>17</b>   | <b>18</b><br>9 a.m. Presbytery Meeting at Grace Covenant Church, Richmond |
| <b>19</b> 8:55 a.m. Worship<br>10:05 a.m. Sunday School<br>10:05 a.m. Congregational Meeting<br>11:15 a.m. Worship<br>4 p.m. Youth Choir<br>5-7 p.m. Sr. Hi Youth Grp.<br>Mid Hi Lock-in (thru 2/20) | <b>20</b><br>7 a.m. Men's Bible Study<br>7 p.m. Session Meeting  | <b>21</b><br>9:30 a.m. Staff Meeting<br>9:30 a.m. Mission Sewing  | <b>22</b> Ash Wednesday<br>2 p.m. PW Bible Study<br>5:30 p.m. Bell Choir<br>5:45 p.m. Youth Choir Dinner<br>6:15 p.m. Youth Choir<br>6:15 p.m. Praise Team<br>7:00 p.m. Ash Wednesday Worship <br>7:30 p.m. Sanctuary Choir | <b>23</b>   | <b>24</b>   | <b>25</b>   |
| <b>26</b> 1st Sunday in Lent<br>8:55 a.m. Worship<br>10:05 a.m. Sunday School<br>11:15 a.m. Worship<br>4 p.m. Youth Choir<br>4-6 p.m. Mid Hi Youth Grp.<br>5-7 p.m. Sr. Hi Youth Grp.                | <b>27</b><br>7 a.m. Men's Bible Study<br>7 p.m. Board of Deacons   | <b>28</b><br>9:30 a.m. Staff Meeting  | <b>29</b> 2 p.m. PW Bible Study<br>5:30 p.m. Bell Choir<br>5:45 p.m. Youth Choir Dinner<br>6:15 p.m. Youth Choir<br>6:15 p.m. Praise Team<br>7:30 p.m. Sanctuary Choir   |   |   |   |

## First Presbyterian Church Memorial Garden Are You Aware?

Many people in our congregation may not be aware of the history and the intent of our lovely Memorial Garden. Situated close to the entrance of the chapel, they may pass by this peaceful spot only occasionally, never realizing it is a consecrated area created as the resting place for the ashes of members of First Presbyterian Church and their loved ones.



Around 1995 while on a trip to Atlanta, Georgia, Pat and Ed Davis saw an attractive Memorial Garden which was part of a Presbyterian Church property. They were inspired to think what a benefit a Memorial Garden would be for the members of First Presbyterian Church. It could offer an answer to those members looking for a meaningful burial place. A location where family members could conveniently stop and pray, or reminisce quietly in attractive surroundings. When the subject was presented to the Session, it was approved, and Marty Grattan was appointed to chair a committee consisting of Pat Davis, Johanna Chase, Liz Meiburg, and Terry Forbes. David Pettit and Ralph Stoudt each added invaluable help. For two years these folks delved into every aspect, both with the congregation and with city committees for advice and approval. They were then aided by the help of Scott Price, talented landscape designer with Snow's Nursery and also a member of First Presbyterian Church.

On Sunday December 19, 1999, the First Presbyterian Church Memorial Garden was consecrated in a simple service by Dr. Tom Kennedy and later that afternoon the first burial was performed by Dr. Kennedy. Since that date, 29 members have been committed to the Garden. Their names may be seen on the bronze plaques which hang on the exterior wall of the chapel, very close to the Memorial Garden. There is also a book of archival quality bearing all the names and memorabilia pertaining to those buried within the Garden.

Thanks to the dedication and hard work of the original Memorial Garden Committee, the members of First Presbyterian Church have a meaningful option for celebrating the closing of the Circle of Life.

-Jean Carswell

### 1999 Mission Statement of First Presbyterian Church Memorial Garden

The First Presbyterian Church Memorial Garden is designed to minister to the needs of First Presbyterian Church members and their families by providing an appropriate and carefully maintained consecrated site for the interment of ash remains. The Memorial Garden is intended to be a place for church members to reflect and linger individually or gather as a group. A renewed understanding of the opportunity to celebrate eternal life and memorialize the worth of individuals has encouraged the development of this garden. It is designed to close the circle of ministry from birth to death while providing continual physical relationship with the church.

The current members of the Memorial Garden Subcommittee, a subcommittee of the Worship Committee, are Jean Carswell, Terry Forbes, George Grattan, Dick Herath, Jim Hubbard, Luther Morris, and Mary Elizabeth Snoddy. Informational brochures are available in the Church office.

## Announcements & Prayer Concerns

### Let Us Remember In Prayer

#### Those Mourning the Loss of a Love One:

Jan, Bob, Bobby, and Becky Garnett and family, following the loss of Jan's mother on January 17

Jim and Gail Hassmer and family, following the recent loss of Jim's father

Elizabeth, David, Crista, and Lisa Norfrey, following the death of Elizabeth's father on January 22

The family of David and Elizabeth Norfrey's friend Carol, following Carol's recent death  
Presley and Jocelyn Thach and family, following the loss of Presley's mother on January 3.

#### Those with cancer and receiving treatment:

A. J. (friend of Richard Myers);  
Janine Armstrong (daughter of Frank and Doris Beddow); Art; Ronnie Bradshaw (friend of Donna and Robert Packard);  
Greg (brother of Dory Hulse); Mary Jo Hill (daughter of Betty and Jim Adams); Janet (friend of Downing Miller); Joe Mc. (friend of David Rathburn); Donna Packard; Rita (Courtney Wood's cousin); Eddie Wood (Courtney Wood's father-in-law)

#### Those recovering from surgery, illness

**or accident:** Dick Comey; Dick Herrmann; Roger Hill; Charlotte Neuhauser; Jim Nottingham; Audrey Vail

#### Other prayers:

Doug Friesema, studying at Columbia Seminary, Decatur, GA; doug.friesema@students.ctsnet.edu, Shelley and her daughter Lilly following Shelley's disappearance (friends of Hannah Walker)

#### Those Serving in the Military:

Patrick A. Keller, serving in Afghanistan, Blain Vernon and Jeffery Webb (nephews of Gweneth West), safely serving stateside.

---

**The Worship Committee** reports the following average attendance at worship services in December 2011: 8:55 – 163; 11:15 – 314

*\*Note: There was only one service on Sunday, December 25, at 10:00 a.m., with an attendance of 149*

*December 24, Christmas Eve Service attendance: 6:00 - 346; 9:00 - 406*

**First Presbyterian Church**  
**500 Park Street**  
**Charlottesville, Virginia 22902**

Change Service Requested

Non Profit Org.  
U.S. Postage  
PAID  
Charlottesville, VA  
Permit No. 51

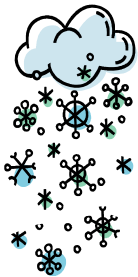


### **Upper Parking Lot Reserved on Sunday for Walking Impaired**

**Beep! Beep!** The upper parking lot is currently reserved on Sundays, and special weekday services, for those who are handicapped or who have requested a special permit from the church office. Please contact Judy Blair, FPC Business Manager, for a permit if you need access to parking near the sanctuary but do not have a handicapped tag. We do not want a walking impairment to limit anyone's ability to participate in church activities. Also - a **wheelchair** has been placed at the north entrance for those in need of mobility assistance.

### **Inclement Weather!**

**Don't forget!** Tis' the season for snow and ice. Please listen to any of the following public broadcasting systems to see if First Presbyterian is closed or opening late in the event of a storm:



Television -  
WVIR (29)  
WCAV (19)  
WVAW (16)  
WAHU (27)

Radio -  
WINA (AM 1070)  
WQMZ (FM 95.1)  
3WV (FM 97.5)

### **Help Us Welcome Your Newborn!**

Please share with us as soon as is possible the birth of your child, so that our church family can share in your joy and welcome your little one with open arms and hearts. We'd like to have the opportunity for pastoral outreach, as well as to place a rose on the communion table announcing the birth.



### **Pledge Envelopes for 2012**

Pledge envelopes for 2012 are available in the hallway by the Chapel for those who requested them. If you did not ask for a box of envelopes but would like to have one, please contact the church office. Also contact the church office if your envelopes should be mailed to you.

We are using the same envelope style as last year, where the envelopes do not have specific dates. The month and 1<sup>st</sup>, 2<sup>nd</sup>, 3<sup>rd</sup> or 4<sup>th</sup> Sunday are noted on envelopes, and for the months with 5 Sundays, you'll find extra envelopes labeled "5<sup>th</sup> Sunday" in the back of the box.

**Help our Pastoral Staff** care for you by notifying us when you, friends, or family are expecting a birth, faced with an illness, hospitalization, outpatient procedure, or serving overseas in the Armed Forces.

If you have a pastoral care emergency, please contact our pastors at their home phone numbers.

Rev. David Forney - 987-5285  
Rev. Kim Wells - 971-7552

